



# OPERATORS HANDBOOK AND WARRANTY

TRANSPORT, PIN MOUNT, SUMP, SQUAT,  
HORIZONTAL AND BAFFLE ABOVE GROUND TANKS

[www.enduramaxx.co.uk](http://www.enduramaxx.co.uk)  
[sales@enduramaxx.co.uk](mailto:sales@enduramaxx.co.uk)

**ENDURAMAXX®**



# ENDURAMAXX TRANSPORT TANKS

Enduramaxx heavy duty horizontal transport tanks are designed for the transportation of liquid such as water (potable and non-potable) and chemicals, such as liquid fertiliser.

Manufactured from polypropylene, transport tanks are lightweight, highly impact resistant and easy to fill. The tanks are designed to mount onto flat surfaces and utilise a unique pin mounting system. Tanks can be supplied with or without a pump plate.

## TANK USE

Use your tank only for its designated purpose. Do not subject its contents to pressure or attempt to create a vacuum.

Ensure that the materials stored in the tank are compatible with the tank's properties, fittings, gaskets, and accessories.

## HANDLING

Extreme care should be taken when unloading your tank from our delivery lorry. It should be inspected for damage before the delivery is accepted.

Contact us immediately on 01778 562810 so we can work with you to correct any problems as quickly as possible.

On purchasing an Enduramaxx tank or system, customers are requested to read all documents carefully.

- Step 1:**  
Complete Warranty Registration Form on line at [enduramaxx.co.uk/warranty](http://enduramaxx.co.uk/warranty)
- Step 2:**  
Purchase or manufacture frame/mounting system in conjunction with Enduramaxx's design/plan
- Step 3:**  
Mount and secure tank in compliance with specifications as supplied by Enduramaxx
- Step 4:**  
Ensure the connection between any fixed pipework and the tank (or tank outlet) allows for movement.

WARRANTY  
REGISTRATION

## WARNING LABELS

- Please take note of the stickers which are attached to the tank.
- Please ensure that these instructions are followed.
- Safety decals should be kept clean and legible at all times.
- If any decals are missing or unreadable, they should be replaced by ordering new labels from Enduramaxx.

## WARNING

- Do not exceed vehicle manufacturers loading, towing or lifting specifications and regulations.
- Ensure tank is firmly secured in an appropriate manner.
- Use caution at all times, particularly when driving on rough or steep terrain.
- Comply with chemical manufacture and all relevant legislation.

## WARNING

Read before using tank

**ENDURAMAXX**  
FLUID MANAGEMENT INNOVATION

1. This tank can only be used with polyethylene compatible liquids. If you are uncertain, ask your chemical supplier if your material can be safely stored in a polyethylene tank.
2. USE OF THIS TANK WITH ANY OTHER MATERIAL COULD CAUSE THE TANK TO FAIL RESULTING IN INJURY OR PROPERTY DAMAGE.
3. This tank MUST be drained out before use.
4. Fill with water before installation to check for leaks.
5. This tank MUST be drained out before changing liquids.
6. FAILURE TO DO SO MAY RESULT IN A DANGEROUS MIXTURE OF CHEMICALS WHICH MAY CAUSE DAMAGE TO THE TANK OR NEARBY PERSONS OR PROPERTY.
7. Vertical flat bottom tanks MUST be installed on a solid flat, level surface. Please refer to your tank installation guide for further information.
8. This tank is NOT fire resistant, never expose it to open flames or heat.
9. Keep sharp objects away from this tank.
10. FAILURE TO DO SO COULD RESULT IN THE TANK BEING PUNCTURED AND THE CONTENTS ESCAPING, CAUSING INJURY TO NEARBY PERSONS OR PROPERTY.
11. ALWAYS keep this tank tightly covered. Children or animals could enter when the cover is not secured.
12. This tank is designed for ABOVE ground use only. DO NOT BURY.
13. Liquids stored in this tank MUST NOT exceed 40°C.

THIS TANK MUST ONLY BE LIFTED WHEN EMPTY

01778 562810

Registered office: Enduramaxx Limited | Ovington Road | The Fen | Boston | Lincolnshire | PE16 9PT  
Company registered in England and Wales with registered number 08922671

[www.enduramaxx.co.uk](http://www.enduramaxx.co.uk)

## TECHNICAL INFORMATION

Our technical information, whether verbal, in writing or by way of trial sampling, is given in good faith but without warranty and this also applies where propriety rights or third parties are involved.

It does not release you from the obligation to test the products supplied by us as to their suitability for the intended processes and uses.

The application, use and processing of the products are beyond our control, therefore, entirely your own responsibility. Should, in spite of this, liability be established for any damage, it will be limited to the value of the goods delivered by us and used by you.

**ENDURAMAXX**

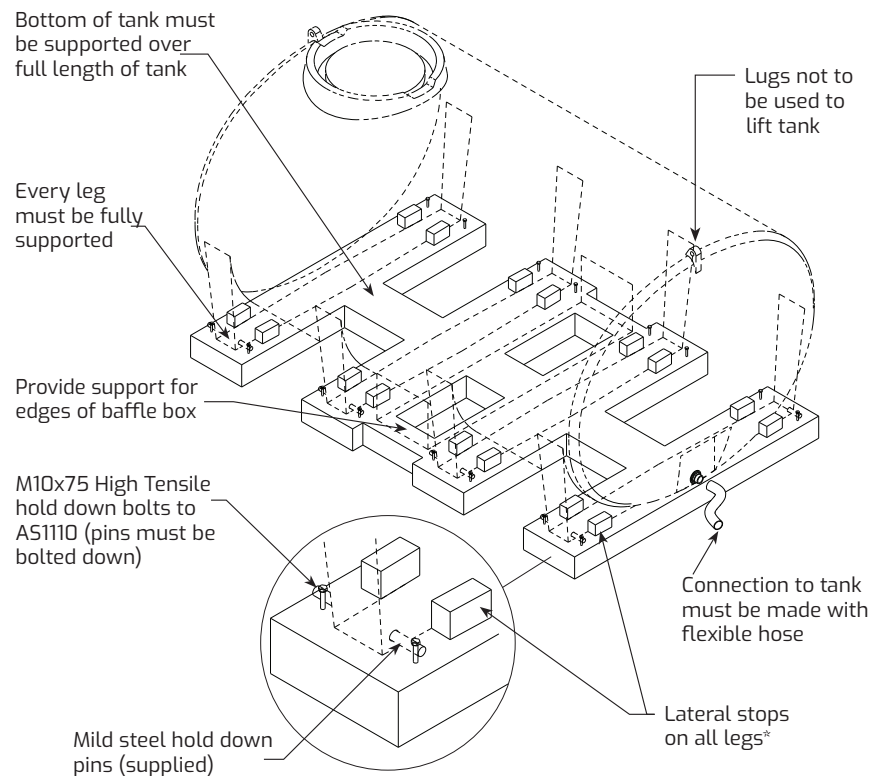
[www.enduramaxx.co.uk](http://www.enduramaxx.co.uk)



## FRAME DESIGN

**Tank warranty is conditional on the tank being correctly mounted.**

**Where applicable mounting may have to be designed and/or approved by an engineer.**



\*Lateral stops recommended for all tanks 3,000L and larger.

## LOAD CAPACITY & LIQUID SURGE



### IMPORTANT NOTICE

- Please take note of your tank's load capacity.
- Do not exceed your tank's load capacity.

AVAILABLE SIZES	400 - 10,000L	200 - 15,000L	1,000 - 15,000L
SPECIFIC GRAVITY	1.1 : 1 SG	1.3 : 1 SG	1.6 : 1 SG
SUITABLE LIQUIDS	Water only up to 1.0SG	Water, non-hazardous liquids up to 1.3 SG	Molasses & liquid fertilisers up to 1.6 SG

### BAFFLE BALLS

Enduramaxx strongly recommends the use of the ball baffle system to control liquid surge when in transit.



#### BAFFLE BALLS - NATURAL COLOUR

CODES	SIZE	DIMENSIONS (Diameter mm)	WEIGHT (g)	RECOMMENDED QTY	DISPLACEMENT (ml)
177005	Small	195	120	1 per 7 litre tank capacity	150
177010	Large	355	386	1 per 40 litre tank capacity	482

### FITTINGS & ACCESSORIES

Hand-tighten plastic bulkhead fittings. If they are over-tightened, the fittings may leak.

Ensuring the proper support for fittings, valves, pipes, and other tank accessories is crucial. Fittings and attachments on the tank should not bear any weight.

All tanks produced through rotational molding will undergo expansion and contraction during filling and emptying. The connection between fixed pipework and the tank or its outlet must accommodate this movement.

**PLEASE NOTE:** Warranty is conditional on tank being correctly mounted.

**ENDURAMAXX®**

[www.enduramaxx.co.uk](http://www.enduramaxx.co.uk)



## STANDARD TWO YEAR WARRANTY

All Enduramaxx tanks are delivered with a 2 year warranty.

### Includes:

- Workmanship of tank (manufacture)
- Quality of raw materials and fittings
- Integrity and workmanship of frame/skid – if purchased from Enduramaxx
- Guarantee on NEW Tank for a pro-rata period of 10 years (for original purchaser)

### Does not cover:

- Tank mishandling, misuse, or faults caused by failure to follow installation advice or routine maintenance
- Unauthorised alterations or changes to tanks (including welding, cutting, or mounting)
- Damage from use of rigid/fixed outlets to pumps to the other fittings
- Damage from wear or tear
- Incorrect placing and securing of pumps or tanks
- Freight or costs associated with repairs associated with any of the above
- Costs associated with dismantling, installation or reinstallation of the tank or frame
- Contents of the tank.

I acknowledge that if I fail to comply with the mounting, securing and supporting of my tank; I will void the explicit warranty, and could possibly incur the cost of freight to Enduramaxx for the repair of my tank; or at the least, the cost of a nominated and qualified plastic welder to repair the damage.

Please note that on occasion, we are requested to manufacture tanks for non-recommended purposes. In such instances, the customer opts to waive the 2-year warranty, as indicated on the order.

### EXTEND YOUR WARRANTY

To register your tank for extended 10 year warranty go to [enduramaxx.co.uk/warranty](http://enduramaxx.co.uk/warranty). (exclusions may apply)



## CLAIMS PROCEDURE:

CALL  
01778  
562810

### What to do if your product breaks down.

#### Follow our simple steps to make a claim under warranty.

- Please have your order number or delivery postcode, date of purchase and Company purchased from, prior to calling
- Take digital photo of affected area/mount/tank, etc. and email to [sales@enduramaxx.co.uk](mailto:sales@enduramaxx.co.uk)
- Our Warranty personnel will verify your warranty number and advise you of action to be taken
- You will be notified if your product needs to be returned and/or the action to be undertaken
- Our aim is to have your unit returned as soon as possible, depending on the seriousness of your problem
- Remember, it is at the discretion of Enduramaxx to repair, replace or refund the unit

All products are sold in accordance with our terms and conditions of sale: [enduramaxx.co.uk/terms-and-conditions/](http://enduramaxx.co.uk/terms-and-conditions/)  
Also available upon request.



**ENDURAMAXX®**

[www.enduramaxx.co.uk](http://www.enduramaxx.co.uk)





**ENDURAMAXX**<sup>®</sup>

[www.enduramaxx.co.uk](http://www.enduramaxx.co.uk)  
[sales@enduramaxx.co.uk](mailto:sales@enduramaxx.co.uk)