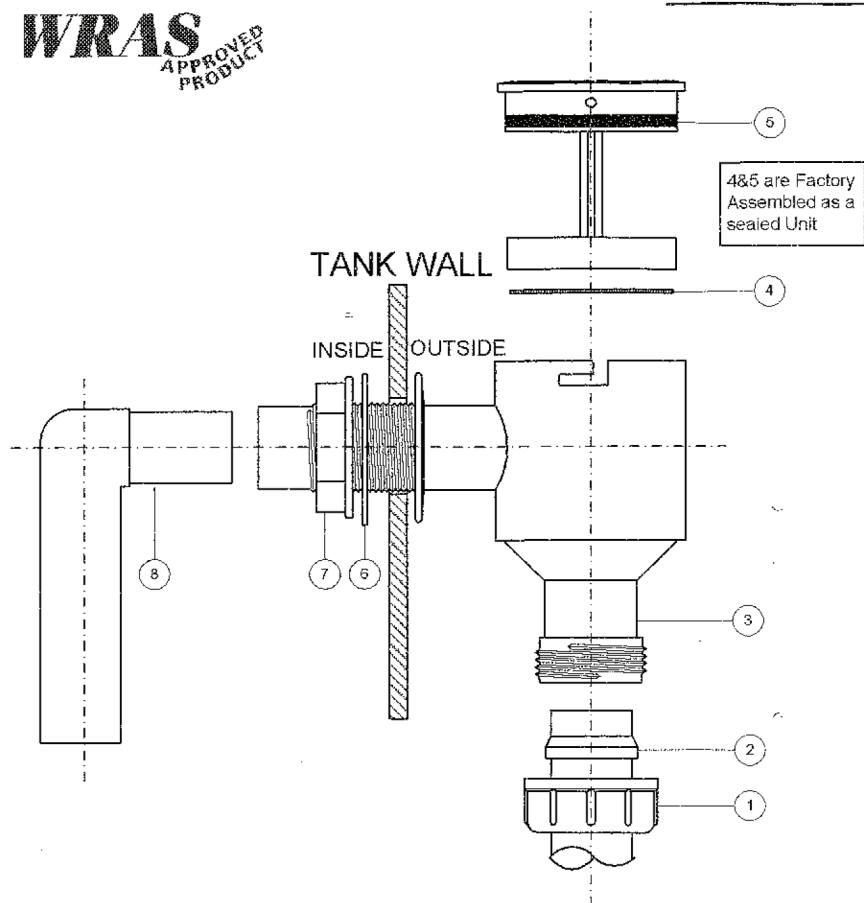


Installation Instructions for:

R30

WRAS
APPROVED
PRODUCT

3/4" Screened Tank Overflow with Quick Release Filter Pack



Install Connector onto Tank by assembling Parts 3, 6, 7 & 8 in positions indicated.

Connect 3/4" / 22mm Pipe into Part 3 Using Nut, 1, and Seal 2 in order and position shown above.

Lock Stainless Steel Filter Unit, items 4 & 5, into Body, 3. Filter Unit can be quick-released as necessary if any further access is required.

R31

WRAS
APPROVED
PRODUCT

3/4" Screened Tank Breather



Install Connector onto Tank Lid by assembling Parts 3, 4, 5 & 6 in positions indicated.

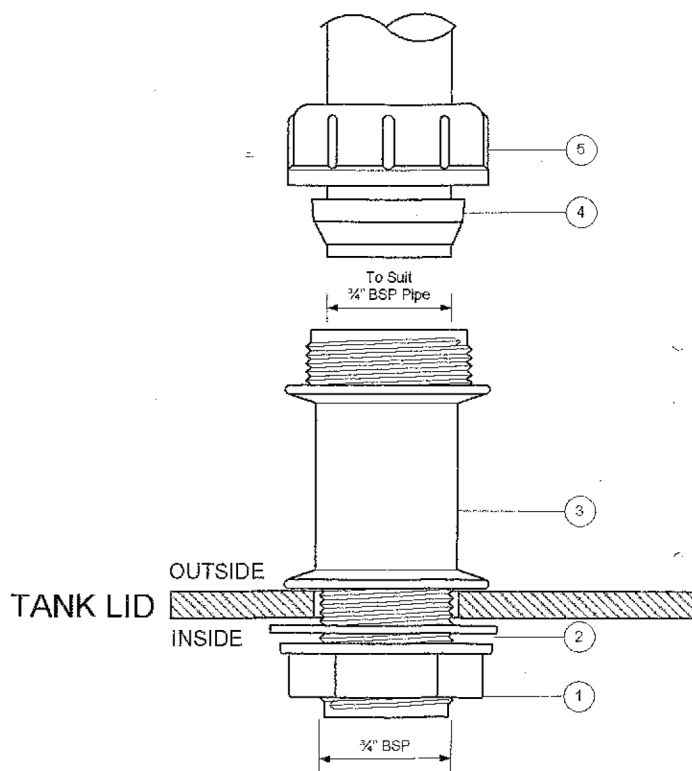
Position Stainless Steel Filter, 2, into Body, 3, and Screw on Lid, 1. Lid can be unscrewed as necessary if any further access is required.

Installation Instructions for:

R33

WRAS
APPROVED
PRODUCT

3/4" Tank Lid Adaptor



Install Connector onto Tank Lid by assembling Parts 1, 2 & 3 in positions indicated.

Connect 3/4" Pipe into Part 3 Using Nut, 5, and Seal, 4, in order and position shown above.